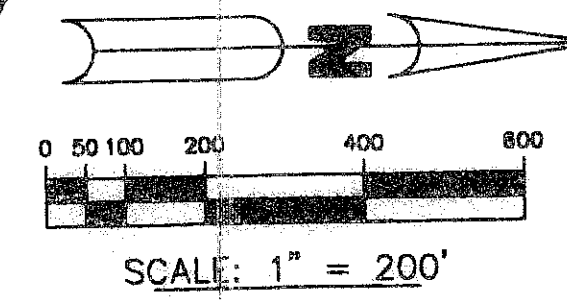


SOUTH COUNTY REGIONAL PARK-PARCEL A

LYING IN SECTIONS 14, 15, AND 22, TOWNSHIP 47 SOUTH, RANGE 41 EAST, PALM BEACH COUNTY, FLORIDA, BEING A REPLAT OF TRACTS Z-1, Z-2, Z-3, Z-4, Z-5, AND Z-6, OF THE BOUNDARY PLAT OF ORIOLE COUNTRY, RECORDED IN PLAT BOOK 32, PAGE 175, AND TRACTS 16 AND 49, AND A PORTION OF THE PLATTED 30' ROAD RIGHTS-OF-WAY LYING IN SECTIONS 14, 15, AND 22, OF THE PLAT OF FLORIDA FRUIT LANDS COMPANY'S SUBDIVISION No. 2, RECORDED IN PLAT BOOK 1, PAGE 102, OF THE PUBLIC RECORDS OF PALM BEACH COUNTY, FLORIDA

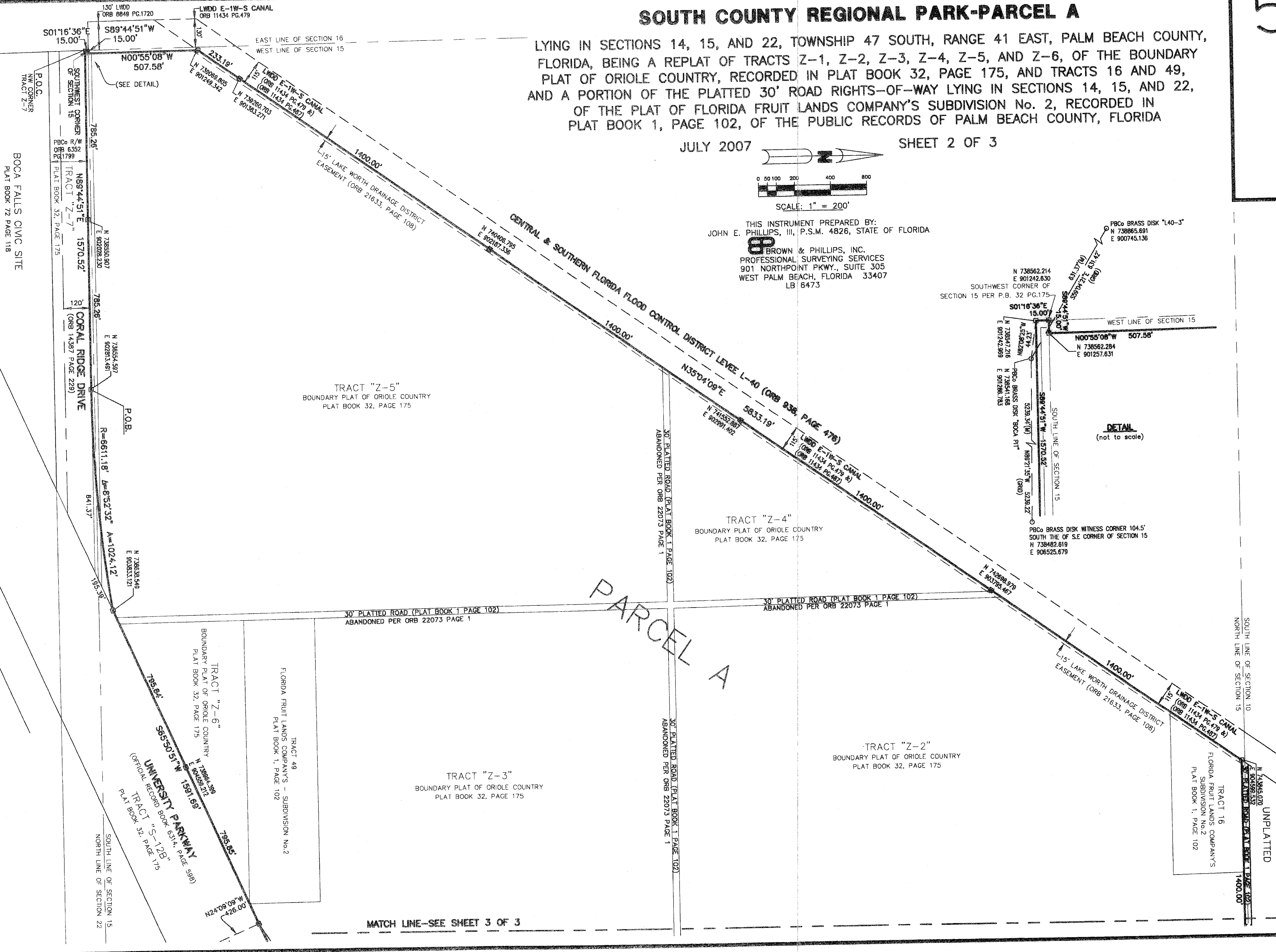
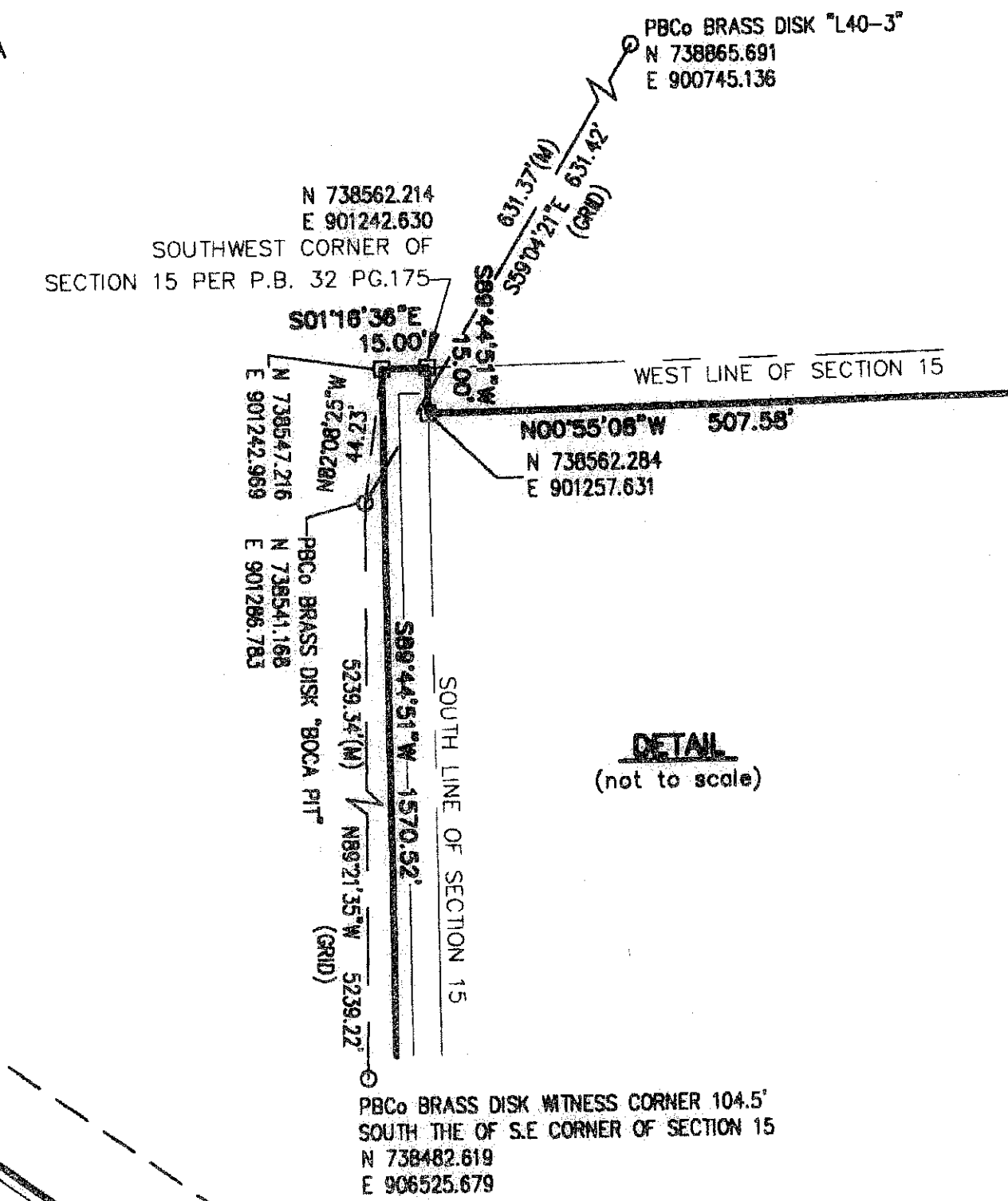
JULY 2007

SHEET 2 OF 3



THIS INSTRUMENT PREPARED BY:
JOHN E. PHILLIPS, III, P.S.M. 4826, STATE OF FLORIDA

B BROWN & PHILLIPS, INC.
PROFESSIONAL SURVEYING SERVICES
901 NORTHPOINT PKWY., SUITE 305
WEST PALM BEACH, FLORIDA 33407
LB 6473



BOCA FALLS CIVIC SITE
PLAT BOOK 72 PAGE 118

UNPLATTED

MATCH LINE-SEE SHEET 3 OF 3